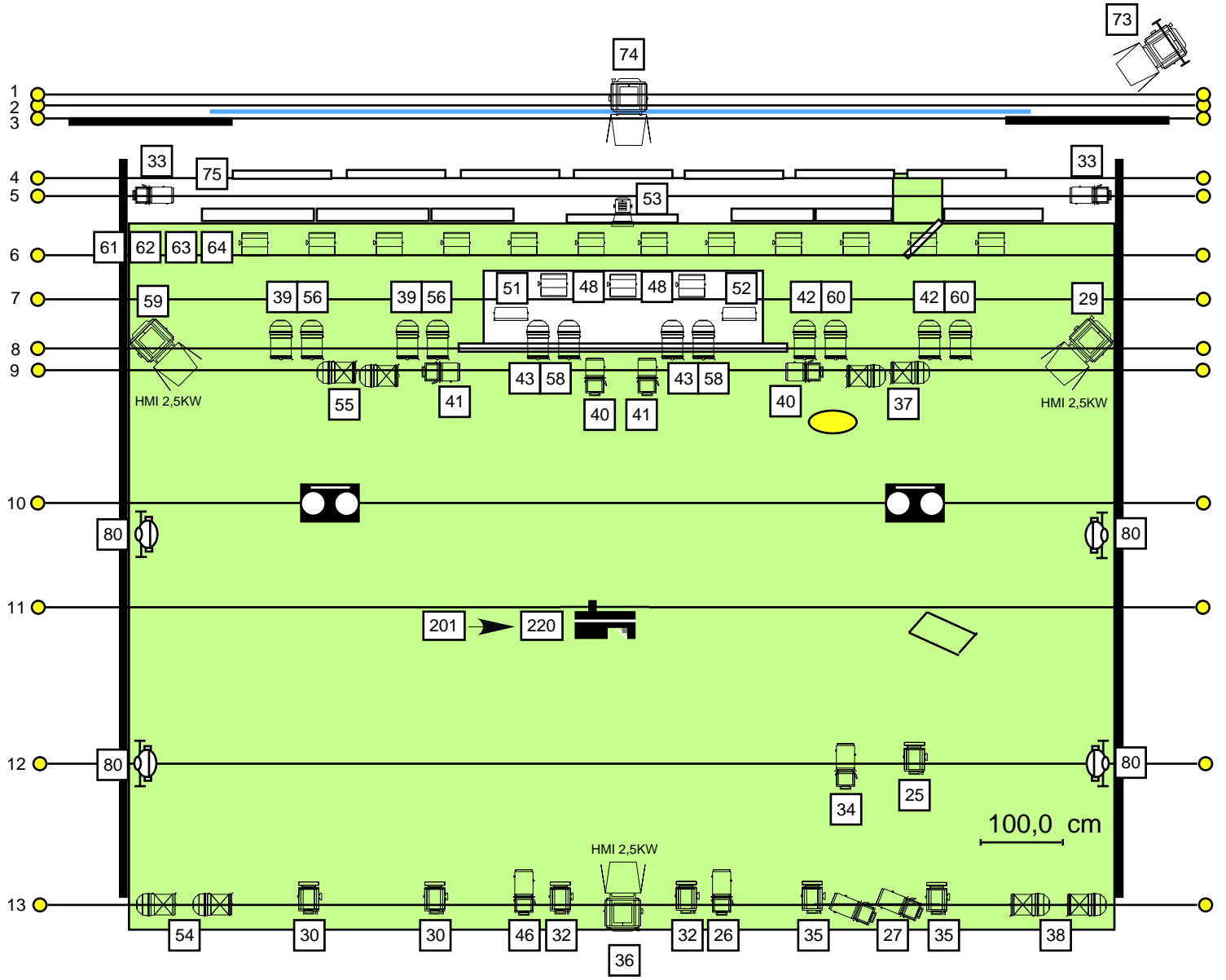
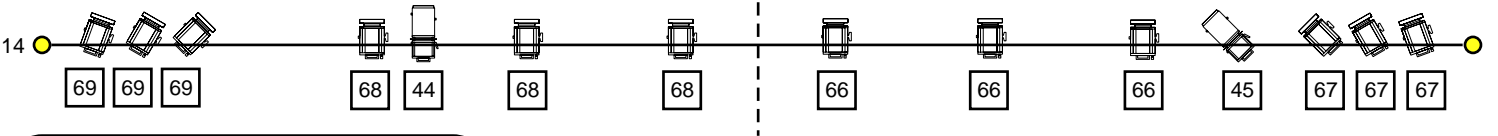


LA CANTATRICE CHAUVE implantation lumière



| | |
|----------------|-------|
| 73 | L.157 |
| 61 62 63 64 | L.120 |
| 48 | L.195 |
| 56 58 60 | L.197 |
| 39 43 42 40 41 | L.201 |

| | |
|-------------|---------------|
| 25 30 32 35 | L.202 + R.119 |
| 66 67 68 69 | |
| 34 45 | R.114 |
| 27 | GOBOS FENÊTRE |



- | | | | |
|---|-------------|----|-------------------|
| 1 | 5KWS | 8 | HMI + PARS CP62 |
| 2 | TOILE | 9 | DEC + PARS CP61 |
| 3 | PENDRILLONS | 10 | SON |
| 4 | FLUOS | 11 | PAL 1200 (h6,30m) |
| 5 | DECOUPES | 12 | DEC + PC |
| 6 | CYCLIODES | 13 | FACE MANTEAU |
| 7 | FRISE | 14 | FACE SALLE |
| | | 15 | |

| | | | |
|--|----------------------|--|---------------------|
| | PC 1KW | | BLONDE 2KW |
| | DEC. 614S | | CYCLIODE ASSYM. 1KW |
| | DEC. 613SX | | HORIZIODE 500W SOL |
| | PAR 64 CP62 | | FLUO |
| | PAR 64 CP61 | | SODIUM 250W SOL |
| | LTM 5KW HMI 2,5KW | | PAL 1200 |